



# neighbourhood planning

Stockbridge Parish Council  
Sarah Hughes  
Neighbourhood Planning Officer

# Introduction

- 1. Localism / National Planning Policy Framework**
- 2. Overview of neighbourhood planning...**
  - What?
  - How?
  - Why?
- 3. Other community Plans**
- 4. Discussion and questions**



# Localism Act

- **Right to plan**
- **Right to build**
- **Right to buy**

Test Valley Borough  
Revised Local Plan DPD

Adopted  
**Local Plan**  
2011-2029



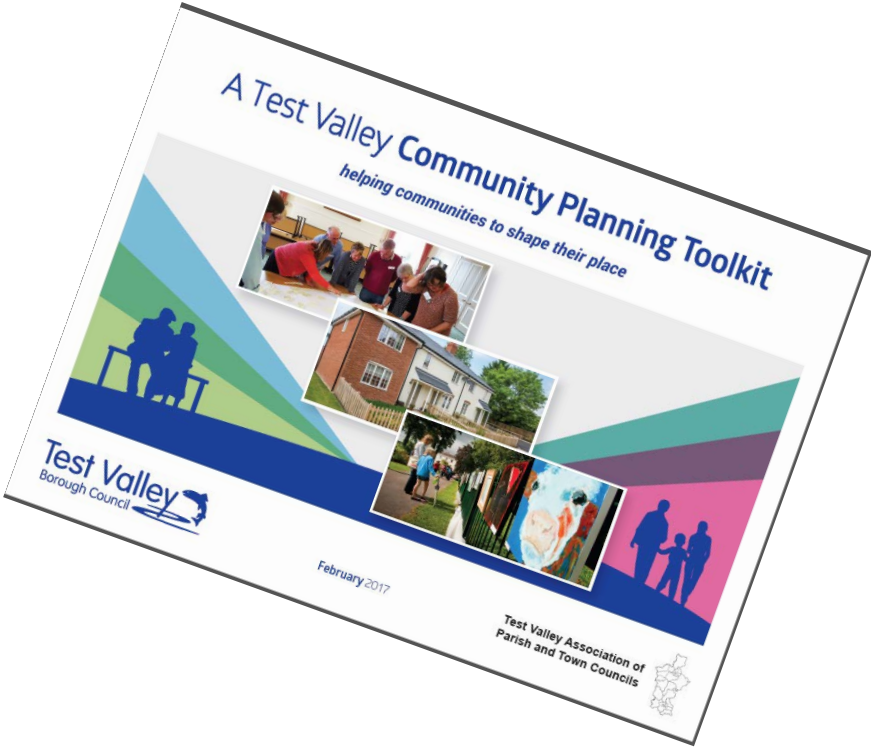
January 2016

Test Valley  
Borough Council 



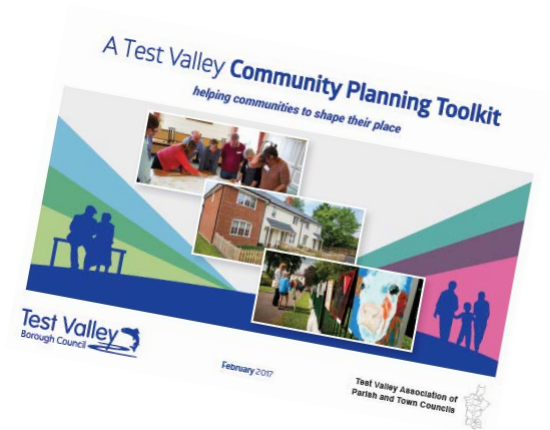
- Up-to-date
- Development needs
- Areas of growth
- Neighbourhood planning

# neighbourhood planning



# Types of community planning

- **Neighbourhood Plan**
- **Supplementary Planning Document**
- **Non Planning Documents**



# Neighbourhood Plan



This can include:

- Neighbourhood Development Plans
- Neighbourhood Development Orders: granting permission for specified development
- Community Right to Build: small scale development



# Neighbourhood Plan



What it is:

- Undertaken by town and parish councils
- Set of planning policies – a local version of the TVBC Local Plan
- Sets out where new homes, shops and businesses should go
- Influence what these things should look like
- Identify and protect important local green spaces



# Neighbourhood Plan

What it can't do:

- Stop development already allocated or permitted
- Propose policies contrary to the local plan and national policy
- Propose development which would breach other legal requirements, such as EU regulations



# Supplementary Planning Documents

This can include:

- Village Design Statements



# Village Design Statement

What it is:

- Owned, led and managed by the village/parish
- An opportunity for everyone to have their say
- Based on evidence
- Planning policy guidelines on the look and feel of future development
- In conformity with TVBC Local Plan
- Adopted by TVBC as Supplementary Planning Document (SPD)

# Non Planning Documents

This can include:

- Parish Plans



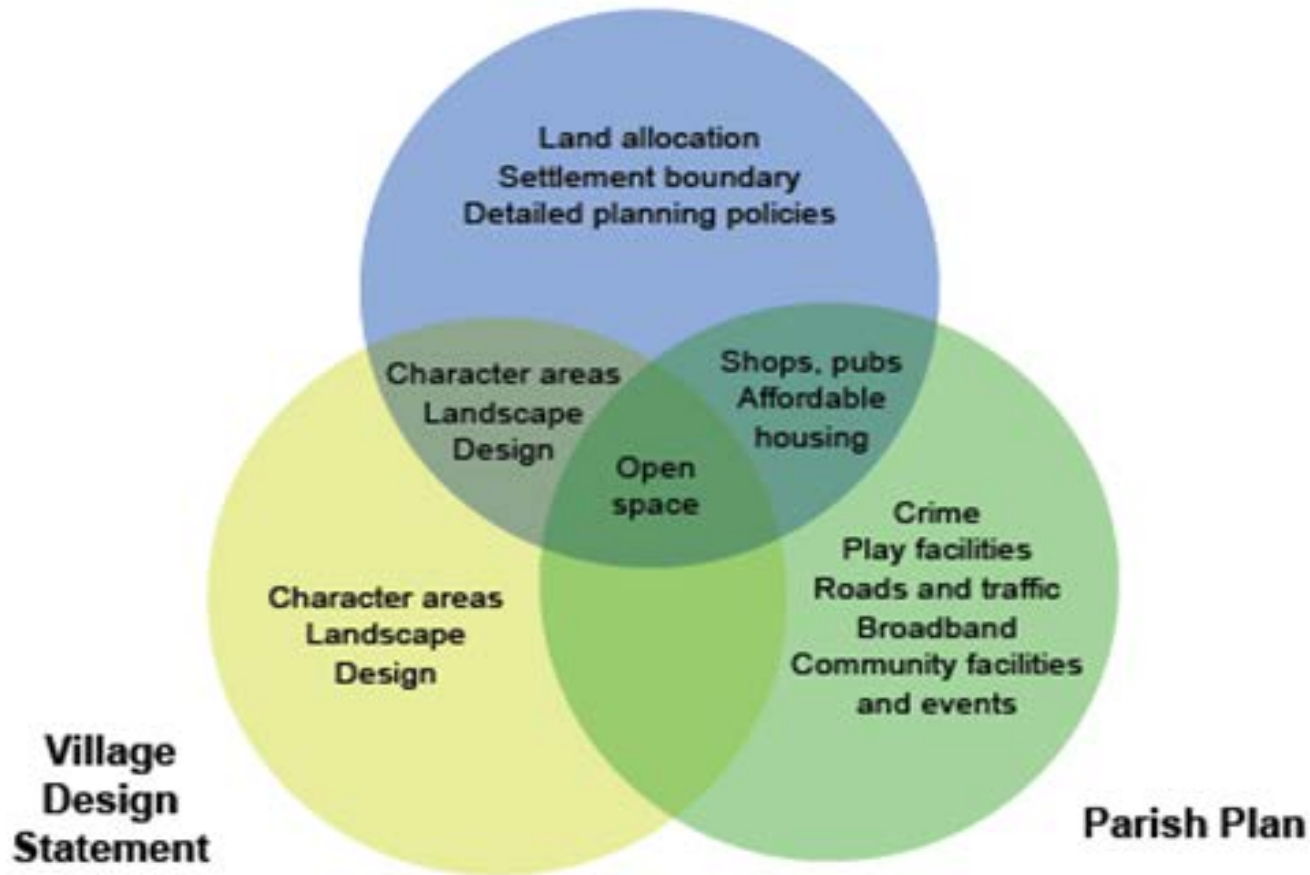
# Community or Parish Plan

- Produced by the community
- Not just land use issues
- Identifies local problems and opportunities
- Sets out an achievable and long term vision for the future
- Prepares a plan of action to achieve this vision

# What type of Plan do you need?

- Don't decide until you fully understand:
  - What are your issues?
  - How much money and volunteer help do you have?
  - Do you want quick wins or long-term solutions?

# Neighbourhood Plan





# Questions ?

